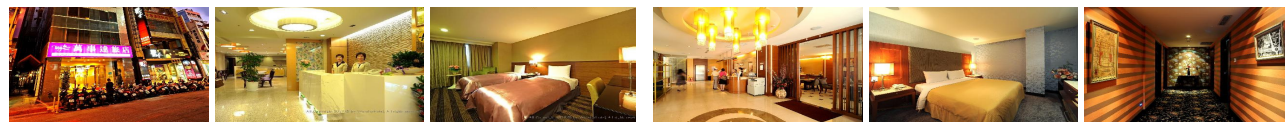


Fascinating Holidays Pte Ltd

04 Days - 03 Nights Taipei Shopping & Chiu Fen Tour



Wonstar Ximen Hotel = It is situated in the heart of Taipei just adjacent to the Ximending recreation center where fashion and business holds the key. It is the most hip and happening part of Taipei where the evening and night is gripped in rendezvous frenzy. It is just 15 minutes away from the domestic airport while the C. K. S. International Airport is 50 minutes' drive from the hotel gate.

Won Star Hotel Chung Hua Branch Taipei, is nestled on section 1 of the busy Zhong Hua Road. This road is on the lively areas of Taipei and has many a shopping, dining and entertainment options. This hotel has a well-connected network of transport and is accessible by road, rail and airways, letting guests access most of the places with ease. The nearest railway station is Xi-Men station which is just five minutes away. The hotel is easily accessible from both Taipei railway station and Taiwan Tao-Yuan International airport.

Guests do have a convenient option of reaching the airport from Taipei main station via bus.

VALIDITY FROM 26 TH JANUARY TO 31 ST DECEMBER 2012			HOTEL	PER ADULT [S\$]			PER CHILD [S\$]		
HOTEL NAME	CODE : TPE4WFE - SQ	ROOM TYPE	STAR	SGL	TWN	3RD	TWN	CWB	CNB
Located in the intersection of Zhonghua Rd and Hankou St where is just 10 minute away from the Ximen station of Taipei metro									
WONSTAR CHUNG HWA	萬事達 (中華)	ROH	3★	1168	958	948	808	768	668
Extension per person per night with breakfast				145	75	75	75	45	20
WONSTAR CHUNG HWA	萬事達 (中華)	Deluxe	3★	1198	998	948	838	768	668
Extension per person per night with breakfast				165	85	75	85	45	20
Located at Xining South Rd - In the heart of Taipei just adjacent to the Hsin-Men-Ding recreation center									
WONSTAR XIMEN	萬事達 (西門店)	ROH	3★	1218	988	958	838	768	688
Extension per person per night with breakfast				150	80	65	80	45	20
WONSTAR XIMEN	萬事達 (西門店)	Deluxe	3★	1238	1018	958	868	768	688
Extension per person per night with breakfast				170	90	65	90	45	20

[AF : 520A /390C]

PACKAGE BLACK OUT PERIOD :-

During 02 - 07, 14 Feb, 24 Apr, 10 May, 06 Jun, 01 Jul, 06 Aug, 12 - 13 Sep, 07 - 10 Oct, 23 - 26 & 30 - 31 Dec 2012.

Hotel surcharge will apply, rates to be advice upon booking.

PACKAGE INCLUDES :-

Return GV2-N economy airfare Singapore / Taipei / Singapore by Singapore Airlines (No Mileage).

Three (3) nights hotel stay with daily breakfast in the hotel (Based on Run Of House Room).

One half day Chiufen and Northeast Coast Tour with Chinese speaking guide (4 hours).

Return private car airport - hotel - airport transfer.

One day MRT Pass valid for unlimited Taipei Metro rides from the first use till the end of service on 1 day (valid for 1 person).

Taiwan Travel Safety insurance inclusion of accidental injury and medical treatment (In accordance of Taiwan laws).

PACKAGE EXCLUDES :-

All international airport taxes and fuel surcharges. Taiwan Government Service Charge and Taxes, Visa Fees, Personal Travel Insurance, Optional Tours and Transfers, Tipping and all other personal expenditures.

HALF DAY TOUR - PLACES OF INTEREST :-

Chiufen Village Tour = She was once centers of gold mining in Taiwan.

The gold is gone, but these quaint old villages, built of closely-packed houses clinging to steep mountainsides, continue to offer enchanting scenery and fascinating glimpses into the lifestyles of the past.

The Northeast Coast National Scenic Area

Located in the northeast corner of Taiwan. The scenic area is noted for its numerous capes and bays backed by green mountains. Next, visit **Pitou Cape**, tall abrasion caves and platforms and other eroded landforms which can be clearly seen on the cape's hanging cliff. The tour continues to **Nanya**, a coastline filled with amazing rock formations, a sea-eroded coral shore. The patterned stone is unique in Taiwan and formed through the weathering of the sandstone that lines the shore. The oxidation of iron ore within the stone gives it a beautiful striped pattern.

AIRLINE HIGH SEASON FARE SURCHARGE :-

Ticket Sale / Issue And Travel Validity On/After 01st September 2011 to on/before 31st March 2012**

For GV2-N Class : As per package (This fare apples for all flight)***.

For Q Class (FIT) : Add on S\$100/- per adult and S\$075/- per child; applicable on all flights.

For E Class (FIT) : Add on S\$330/- per adult and S\$248/- per child; applicable on all flights.

For B Class (FIT) : Add on S\$480/- per adult and S\$360/- per child; applicable on all flights.

CANCELLATION CONDITIONS :-

Cancellation / No Show Or Early Departure: Between 01 - 14 Days prior to arrival full charge apply for the entire reservation.

TERMS AND CONDITIONS :-

Above packages prices is subjected to changes with or without prior notice and payment is based on cash or cheque only.